

Sun Valley Riverfront Park

PRELIMINARY CONCEPTUAL
DESIGN ALTERNATIVES

MARCH 2020



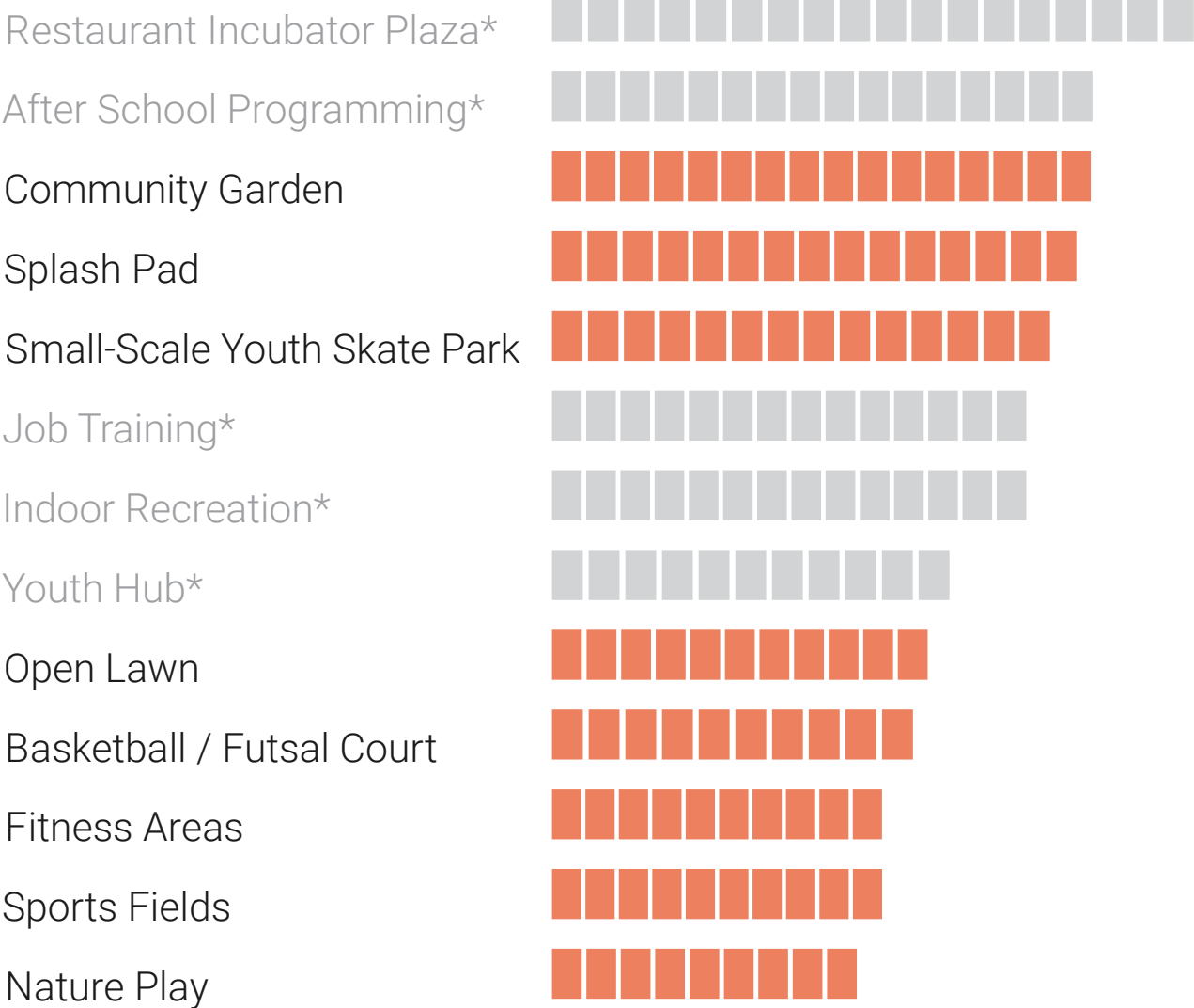
Table of Contents

Summary of Previous Influences

2017 PUBLIC SPACE FEEDBACK SUMMARY

Based on the community feedback during the Fall 2017 community meetings, the following uses and activities were desired for the parks and public spaces within Sun Valley.

PRIORITIES



*The uses and activities shown in gray are still desirable but not feasible in the park area. They will likely be located in other areas of the neighborhood.



Summary of Previous Influences

2019 PUBLIC SPACE FEEDBACK SUMMARY

Community meetings in 2019 provided additional guidance for the public spaces and development character in Sun Valley, including the following:

- 1. Desire to preserve many of the public space program ideas from the previous public meetings, with the addition of greater interest in dog parks.
- 2. Desire for improved accessibility – both ADA sitewide and general accessibility to facilities, including parking, building access, park access.
- 3. Desire for safer/pedestrian focused streets through enhanced intersection treatments, traffic calming devices, and protected bike facilities.
- 4. Safety/Security of buildings is very important to the community.
- 5. A healthy balance of building height/density is important to the community.

PREFERRED PUBLIC SPACE OPPORTUNITIES:

The community also helped confirm the preferred uses and activities for the parks and public spaces, captured in the list below.

- | | |
|-------------------|----------------------------|
| ◇ Public Art | ◇ Large Sports Field |
| ◇ Gardens | ◇ Outdoor Fitness Stations |
| ◇ Parklets | ◇ Wetland Trails |
| ◇ Open Air Market | ◇ Water Play |
| ◇ Skate Park | ◇ Dog Parks |



Character images of the various activities and uses.

Summary of Previous Influences

12 PRIMARY PARK PROGRAM / AMENITY AREAS

 : ALIGNS WITH RIVER SISTERS PARTNERSHIP

Previous community input, and feedback from the River Sisters Partnership team, helped identify the preferred list of uses and activities for Riverfront Park.



COMMUNITY GARDEN / URBAN FARM



OPEN LAWN



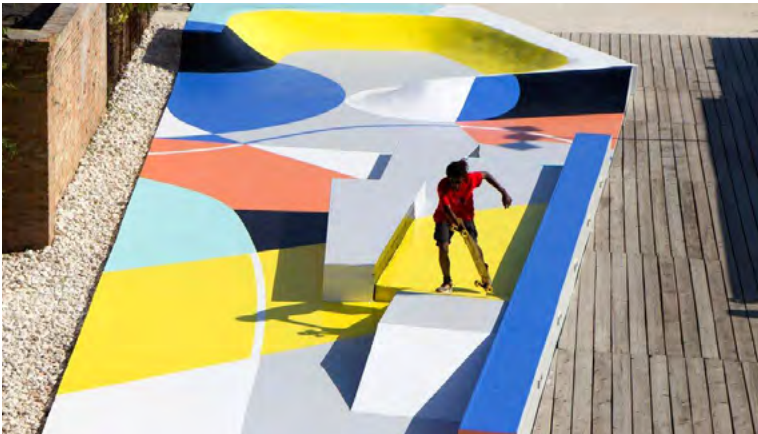
BASKETBALL / FUTSAL COURTS



BOAT LAUNCH



CULTURAL PLAZA



SKATE PARK + PUMP TRACK



NATIVE LANDSCAPE / BOTANIC GARDEN



PUBLIC ART



NATURAL PLAY



LARGE SPORTS FIELD



WATER PLAY



TRANQUILITY GARDEN

Goals & Vision

The goals and vision captured below summarize feedback received from the community as well as Denver Housing Authority and Denver's Department of Parks and Recreation.

GOALS FROM COMMUNITY:

- ◇ Create an active recreation destination
- ◇ Provide places for large and small community gatherings
- ◇ Incorporate food opportunities and/or places for food trucks in or nearby the park
- ◇ Celebrate the cultures of the community in the park design

GOALS FROM DENVER HOUSING AUTHORITY AND/OR DENVER PARKS AND RECREATION

- ◇ Where possible, integrate water quality elements into the park design
- ◇ Incorporate River Sisters concepts seamlessly into the park
- ◇ Protect in place or relocate the existing playground elements
- ◇ Maintain the South Platte River trail connectivity



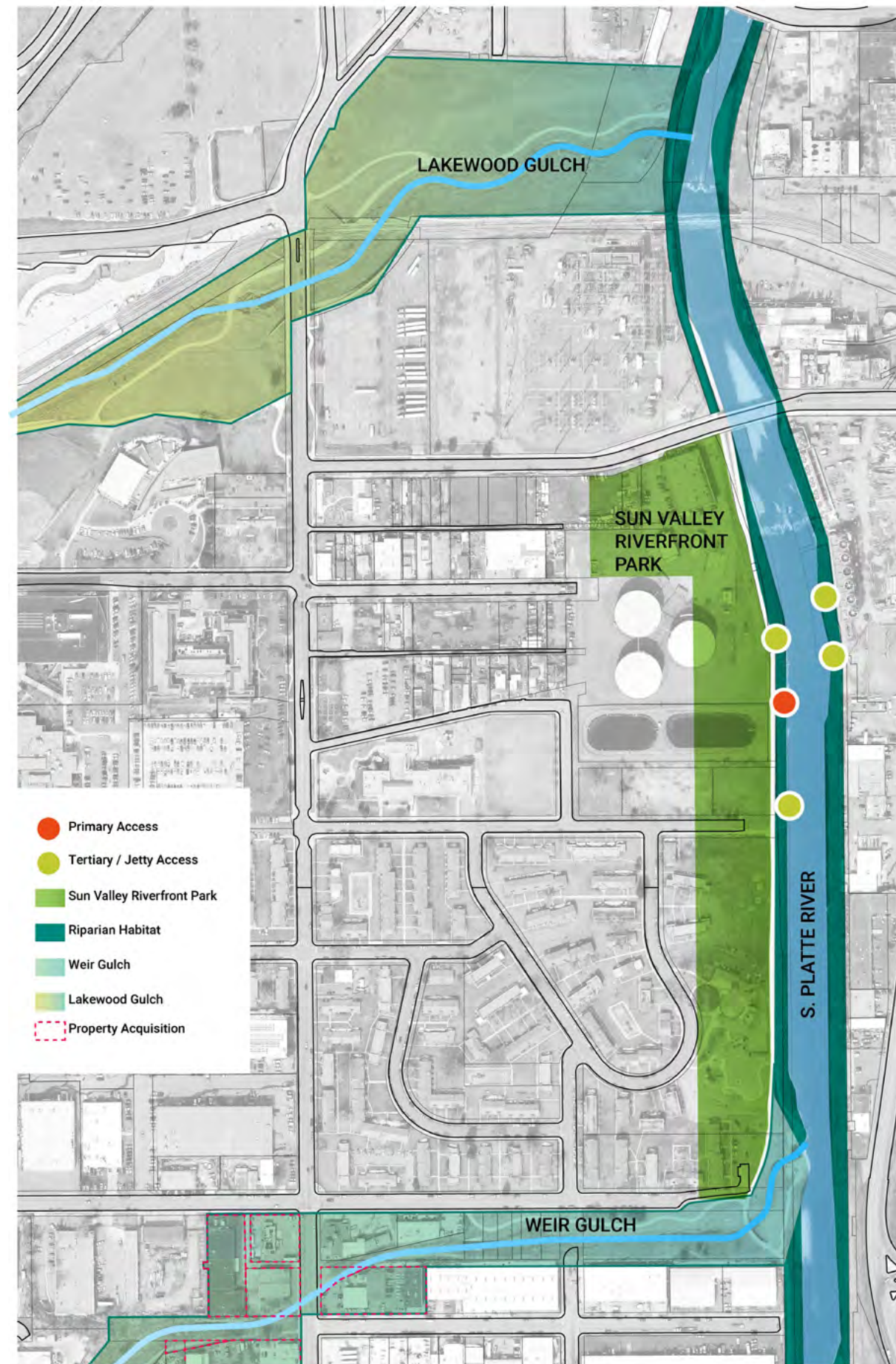
Images from previous community meetings.

Open Space Context

Sun Valley Riverfront Park is an important part of the surrounding open space network. The park will be an active destination with direct access to the larger regional trail network along the South Platte River, Lakewood and Weir Gulch.

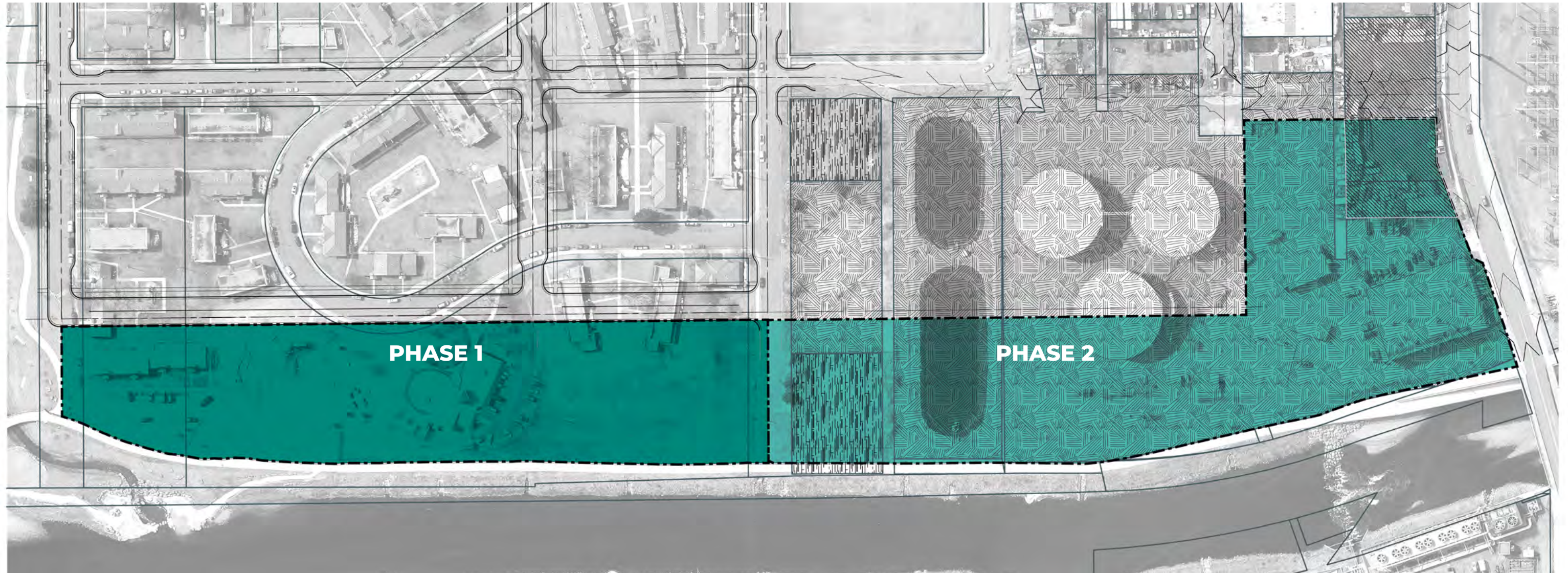
The water and drainage functions of Weir Gulch and the South Platte River are also an opportunity to feature the sustainability goals of Sun Valley, enhance the natural ecology, improve water quality/riparian habitat, and celebrate role water plays as a part of the Colorado River watershed.

New river access points, overlooks, and trails can provide new opportunities to interact with the water and engage with the natural river habitat and riparian areas.



Phasing Areas

Due to the existing site uses, property ownership, and infrastructure, the park will likely be constructed in phases. The exhibit below depicts the two primary phases overlaid on an aerial map of the existing conditions.



PHASE 1

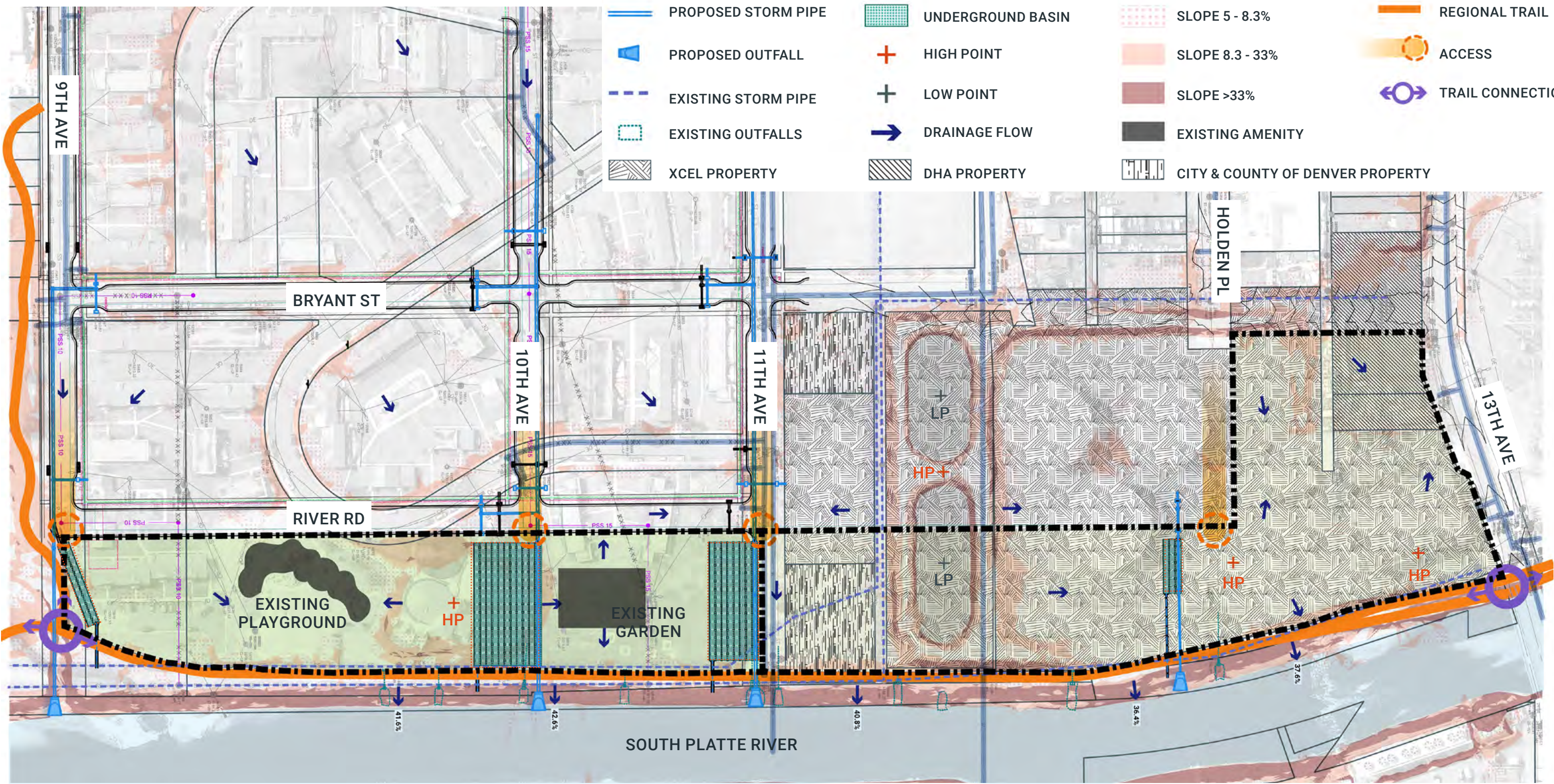
- ◇ Anticipated implementation in 2-3 years.
- ◇ All DHA Property
- ◇ Desire to integrate existing playground and urban garden in early phases

PHASE 2

- ◇ Anticipated implementation in 3 -10 years.
- ◇ Requires acquisition and environmental cleanup of Xcel property
- ◇ Includes additional DHA property along 13th Avenue.

Site Influences & Constraints

The existing site conditions, including utilities, children’s playground, GROW Garden, property ownership, relationship to existing trails, etc. provide a basis for the conceptual park alternatives.



Concept Frameworks & Organization

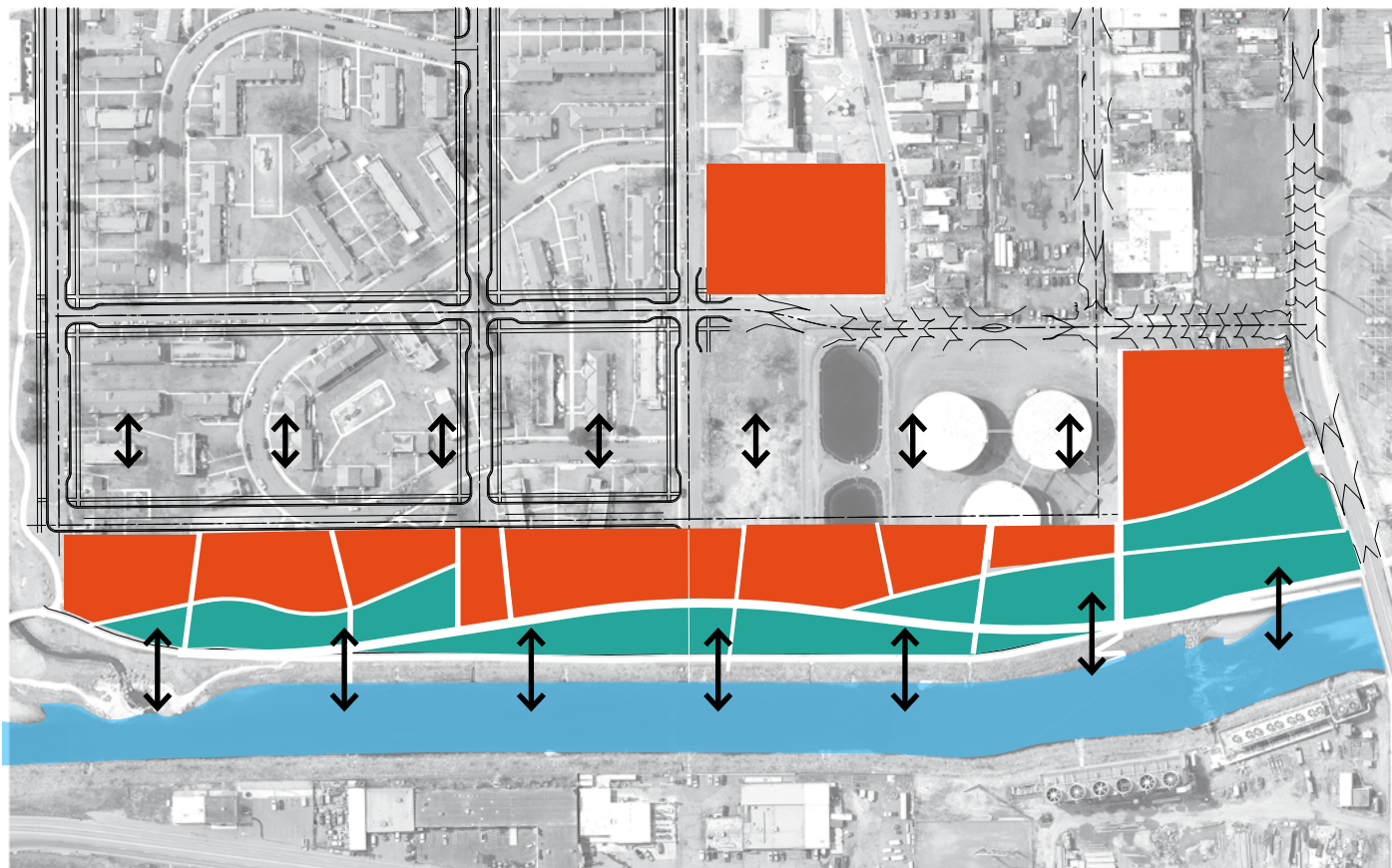
The two basic organizational diagrams were developed to illustrate the location of active and passive uses in the two different concepts.

- Active Programs
- Passive Programs

ACTIVE + PASSIVE PARK ORGANIZATIONAL DIAGRAMS

ACTIVE LINEAR EDGE

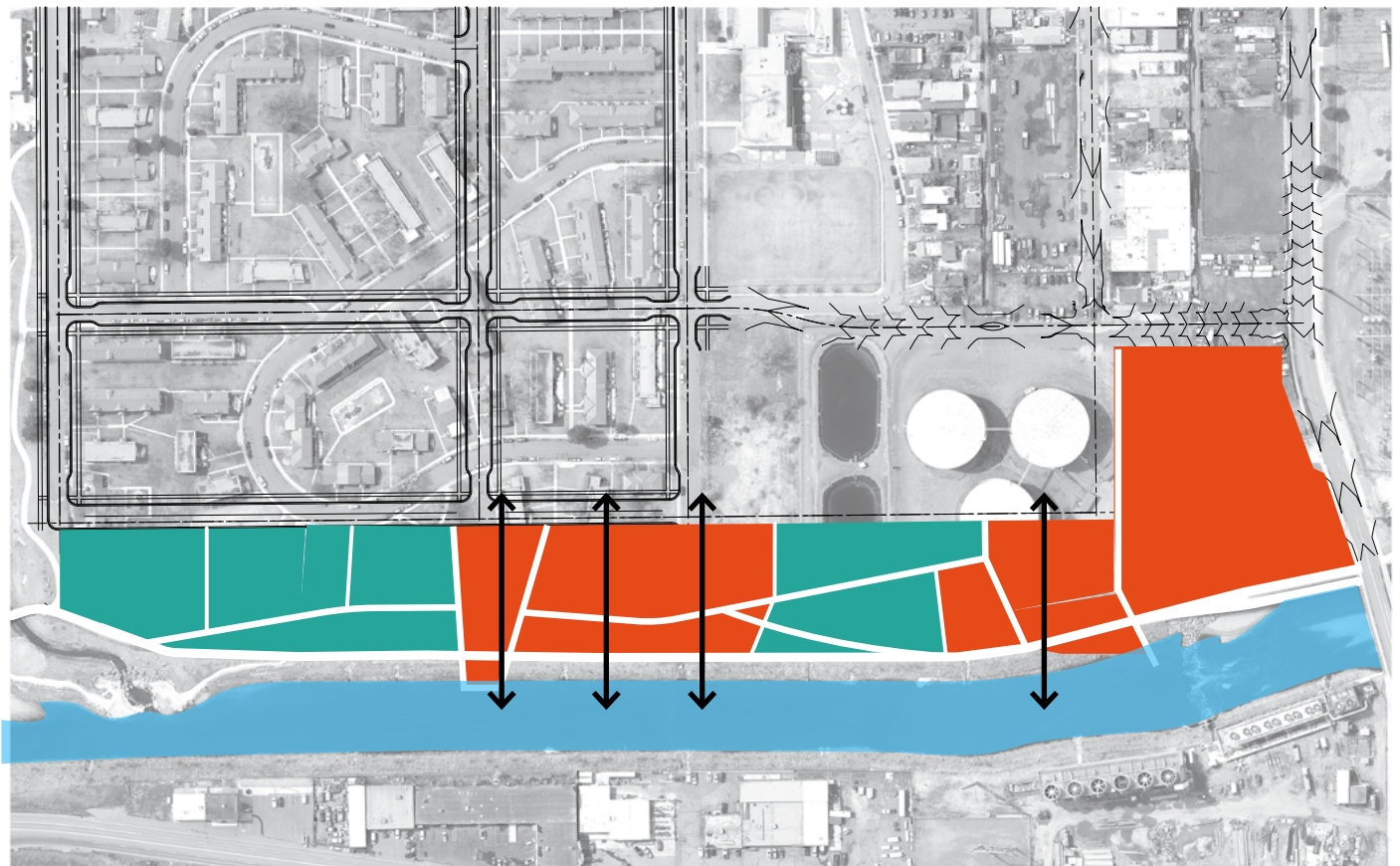
Locates the active uses along River Road and places the passive programs along the edge of the South Platte River. This creates a softer edge along the river.



- Allows for the existing playground & GROW Garden to remain in place
- Allows for the potential to improve the sports field at Fairview Elementary, which could happen in Phase 1

CENTRAL GATHERING NODES

Clusters active uses into nodes with passive uses in-between. This scheme provides active uses from River Road to South Platte River.

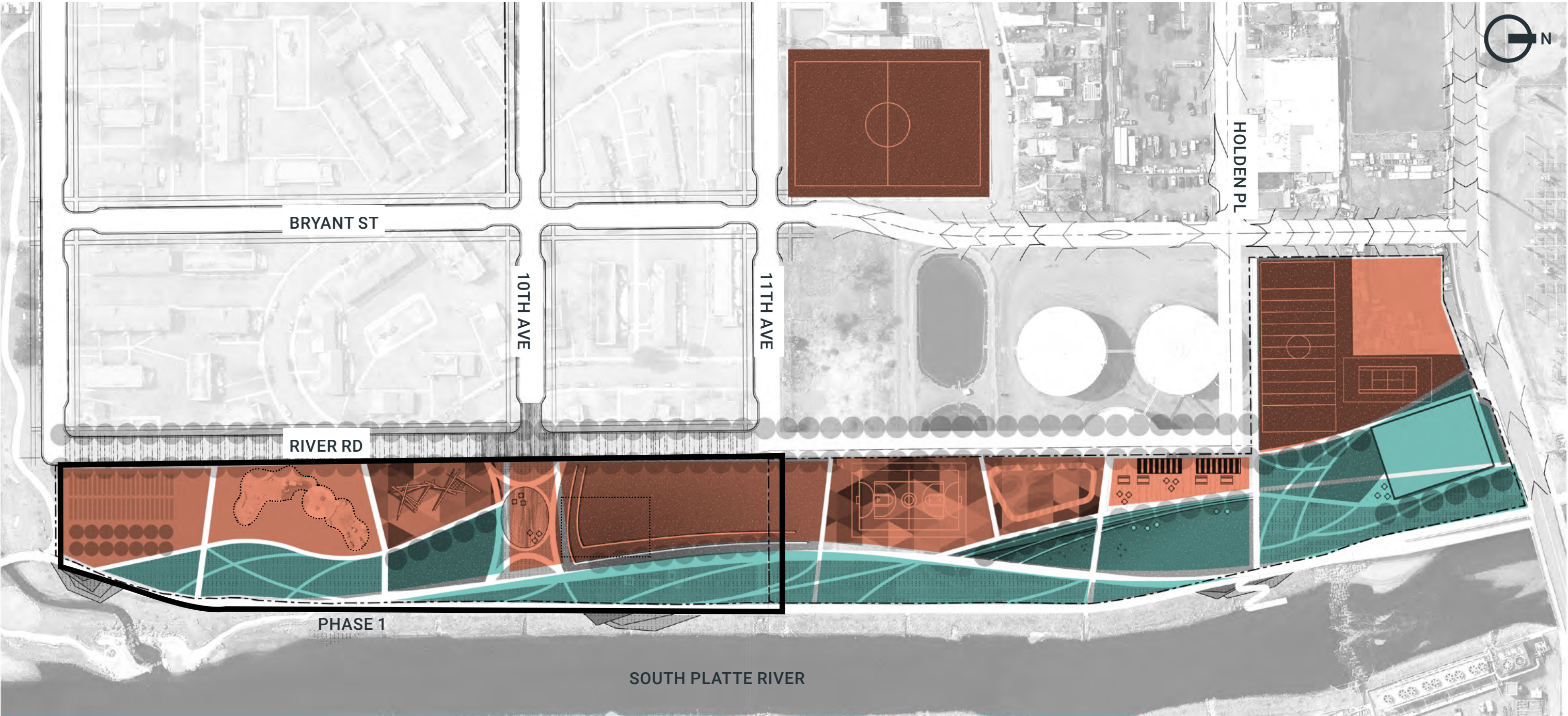


- Relocates/replaces the existing playground and GROW Garden.
- Does not use the Fairview Elementary field and includes a sports field in Phase 2 area.

Concept Study 1

ACTIVE LINEAR EDGE

The image below further highlights the active and passive use areas in Concept 1 overlaid on the proposed concept, which is shown in greater detail on the following page. The black outline represents the Phase 1 area.



Concept Study 1A

ACTIVE LINEAR EDGE - BUILD FROM EXISTING FEATURES

This option keeps the existing children's playground and GROW Garden in their existing location. Click on the different areas below to see character images of the proposed uses.



Concept Study 1B

ACTIVE LINEAR EDGE - RELOCATE URBAN GARDENS

This option keeps the existing children's playground but moves the GROW Garden to the southern edge of the park. Click on the different areas below to see character images of the proposed uses.



Concept Study 1B

CHARACTER IMAGES

CULTURAL PLAZA + WATER FEATURE

A formal plaza with integrated water feature that can work in conjunction with the event lawn, and host large events and gathering such as outdoor movie theater or open air market.

Key Plan - click on this image to return to the concept plan



Concept Study 1B

CHARACTER IMAGES

EVENT LAWN

Flexible open lawn area for community gatherings, events and everyday activities.

Key Plan - click on this image to return to the concept plan



Concept Study 1B

CHARACTER IMAGES

RIVER SISTERS WETLAND GARDEN

Experiential wetland garden that raises awareness to Denver’s connection to San Luis Rio Colorado

Key Plan - click on this image to return to the concept plan



Concept Study 1B

CHARACTER IMAGES

BASKETBALL / FUTSAL COURT

Multi-sports court for versatility

Key Plan - click on this image to return to the concept plan



Concept Study 1B

CHARACTER IMAGES

LARGE SPORTS FIELD

Large field space for organized sports

Key Plan - click on this image to
return to the concept plan



Concept Study 1B

CHARACTER IMAGES

SMALL SPORTS FIELDS & COURTS

Smaller sports fields for compact sports such as small-field soccer, futsal, etc.

Key Plan - click on this image to return to the concept plan



Concept Study 1B

CHARACTER IMAGES

GROW GARDEN / URBAN FARM

Community garden for local food to support healthy living in the neighborhood

Key Plan - click on this image to
return to the concept plan



Concept Study 1B

CHARACTER IMAGES

NATURE PLAY

Natural play areas to promote informal play and exploration of nature

Key Plan - click on this image to return to the concept plan



Concept Study 1B

CHARACTER IMAGES

TRANQUILITY GARDEN

A space for people to reflect on the natural environment in a quiet place

Key Plan - click on this image to return to the concept plan



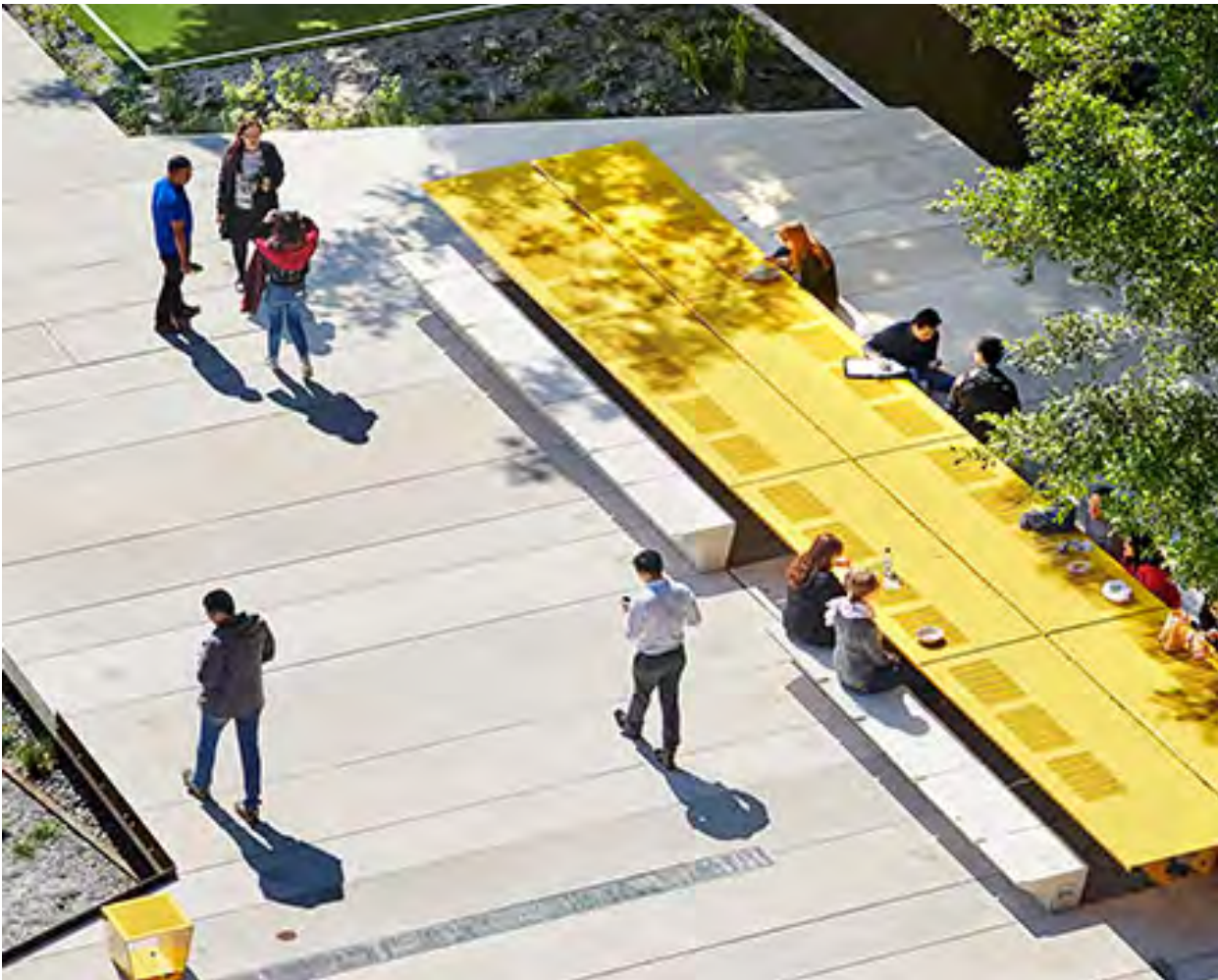
Concept Study 1B

CHARACTER IMAGES

FAMILY PICNIC PLAZA + LAWN

Include playful elements in plaza and lawn for small / family gatherings that creates synergy with the adjacent playground

Key Plan - click on this image to return to the concept plan



Concept Study 1B

CHARACTER IMAGES

SKATE PARK / PUMP TRACK

Integrate skate park with pump track for younger kids

Key Plan - click on this image to return to the concept plan



Concept Study 1B

CHARACTER IMAGES

OBSERVATION MOUNT

Landform as observation area and play zone for kids



Key Plan - click on this image to return to the concept plan

Concept Study 1B

CHARACTER IMAGES

ADAPTIVE REUSE OF EXISTING BUILDING

The potential adaptive reuse of the existing brick building on the Xcel property into a community amenity

Key Plan - click on this image to return to the concept plan



Concept Study

CHARACTER IMAGES

EXISTING PLAYGROUND AND BOAT LAUNCH

Retain the existing children’s playground and play structures as a Riverfront Park amenity

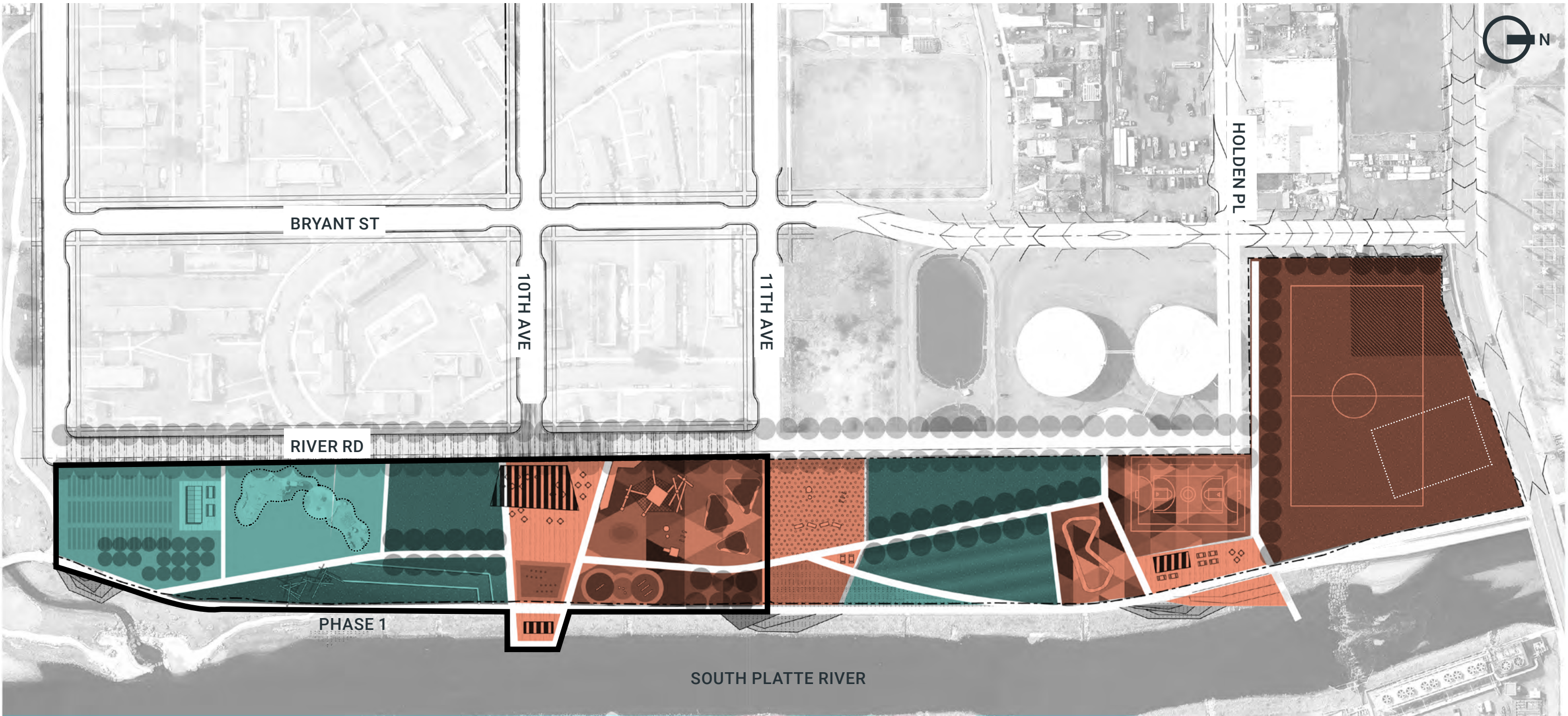
Key Plan - click on this image to return to the concept plan



Concept Study 2

CENTRAL GATHERING NODES

The image below further highlights the active and passive use areas in Concept 2 overlaid on the proposed concept, which is shown in greater detail on the following page. The black outline represents the Phase 1 area.



Concept Study 2

CENTRAL GATHERING NODES

In addition to providing active connections from River Road to the South Platte River, this concept keeps existing playground and relocates GROW Garden to the southern edge of the park. Click on the different areas below to see character images of the proposed uses.



Concept Study 2

CHARACTER IMAGES

PLAZA + SPLASH PAD

Integrate variety of water play with plaza and adjacent playground

Key Plan - click on this image to return to the concept plan



Concept Study 2

CHARACTER IMAGES

RIVER SISTER OVERLOOK PLAZA

Overlook deck with playful furnishing to help people engage with South Platte River

Key Plan - click on this image to return to the concept plan



Concept Study 2

CHARACTER IMAGES

① EVENT LAWN

Flexible open lawn area for community gatherings, events and everyday activities.

Key Plan - click on this image to return to the concept plan



Concept Study 2

CHARACTER IMAGES

③ PLAYGROUND

New playground with active play structures, climbing hills, and integrated nature play elements.

Key Plan - click on this image to return to the concept plan



Concept Study 2

CHARACTER IMAGES

② TERRACE RIVER OVERLOOK

Terraced grass or lawn areas with views overlooking the river corridor.

Key Plan - click on this image to return to the concept plan



Concept Study 2

CHARACTER IMAGES

SKATE PARK / PUMP TRACK

Integrate pump track with landform and lawn area to provide variety of play

Key Plan - click on this image to return to the concept plan



Concept 2

CHARACTER IMAGES

BOAT LAUNCH PLAZA

Use pump track forms for lounging, terraces and platform to get access to South Platte River

Key Plan - click on this image to return to the concept plan



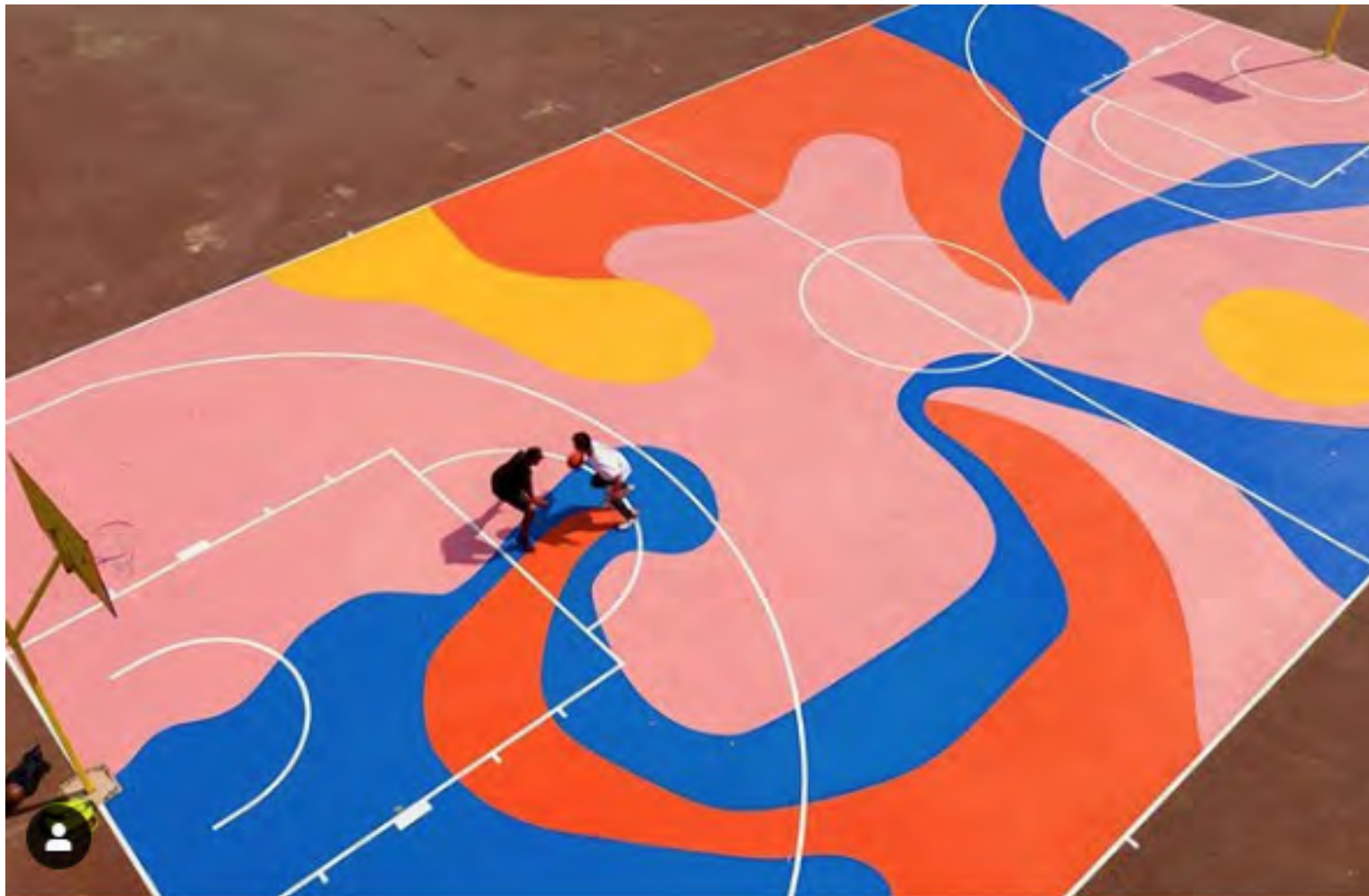
Concept 2

CHARACTER IMAGES

PLAYFUL BASKETBALL / FUTSAL COURT

Multi-use courts with opportunity for colorful surface painting and local artist participation.

Key Plan - click on this image to return to the concept plan



Concept Study 2

CHARACTER IMAGES

GROW GARDEN + URBAN FARM + LOCAL FOOD HUB

Local food hub with large community tables within the GROW Garden and urban farm. Provide opportunities to grow and taste local food in the park.

Key Plan - click on this image to return to the concept plan



Concept Study 2

CHARACTER IMAGES

LARGE SPORTS FIELD

Large field space for organized sports

Key Plan - click on this image to return to the concept plan



Concept Study 2

CHARACTER IMAGES

DOG PARK

Designated dog park with fenced areas, shade and a water station.

Key Plan - click on this image to return to the concept plan

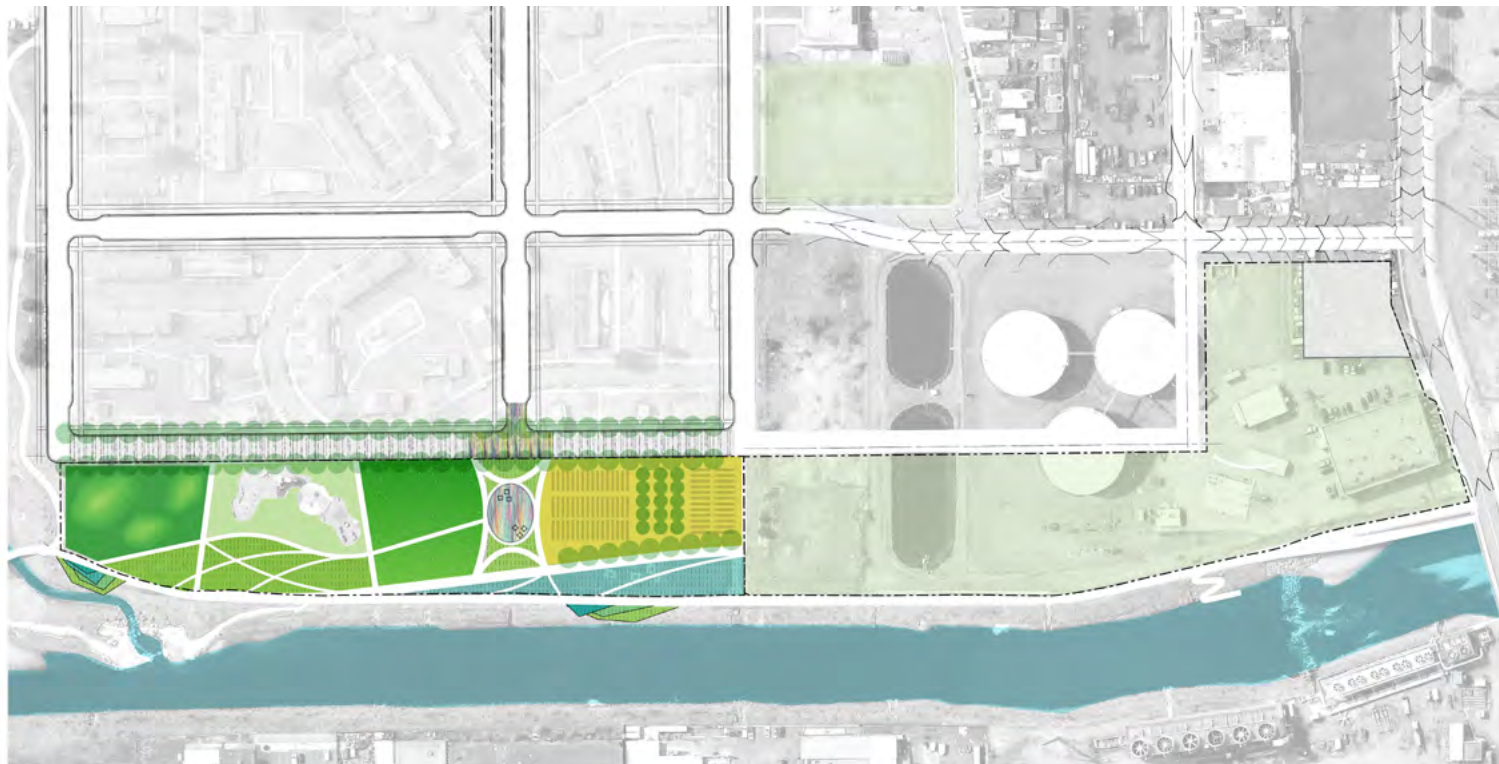


Potential Phasing



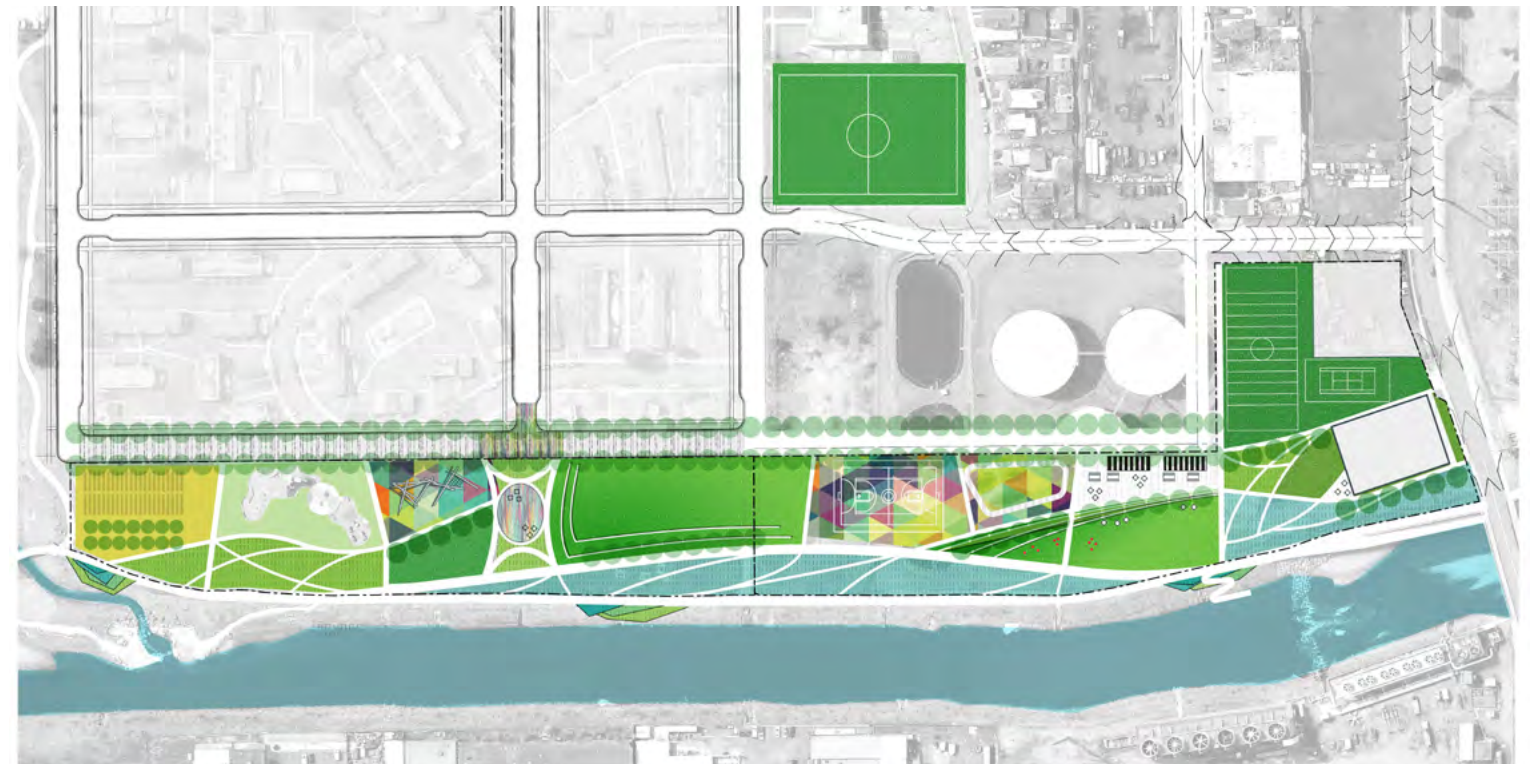
The phasing study below, using Concept 1, illustrate how the park can be implemented in two phases while keeping the existing children's playground and GROW Garden in the Phase 1.

PHASE 1



Keeps existing playground and GROW Garden in Phase 1.

PHASE 2



Moves GROW Garden to the south, expands the existing playground to include nature play, and convert the former GROW Garden area to a large flexible lawn for events and gatherings.



CONCEPT 1



- Allows for the existing playground & GROW Garden to remain in place
- Allows for the potential to improve the sports field at Fairview Elementary, which could happen in Phase 1

CONCEPT 2

- Relocates/replaces the existing playground and GROW Garden.
- Does not use the Fairview Elementary field and includes a sports field in Phase 2 area.